



The Floor Mount Bracket

C50 Stall

- C50 Suspended Cubicles



Here the head to head C50 Stall Suspended cubicles can be seen. It clearly shows the floor mount brackets and the open fronted cubicles which maximise the lunge space for the cow.

These beds are 16 feet [4.85m] across, and the stalls are installed at 3ft9inches [1.15m] centres.

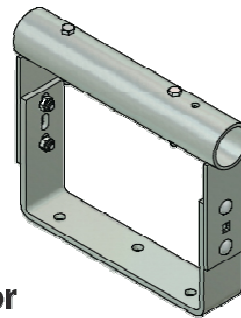
The Floor Mount bracket is installed using **Resin** and anchor bolts in the concrete. It means that no posts are needed to support cubicles anywhere in the building.

The neck bar is at 50 inches [1270mm] above the mattress, and as can be seen with the cow in the background, it doesn't need to be any lower.

For single rows we use **two neck rails** to maximise and strengthen the whole system. Call us for further details!



The Floor Mount Bracket can minimise installation labour costs and time.



Floor Mount

Patent No. US 6,467,434 B1



