

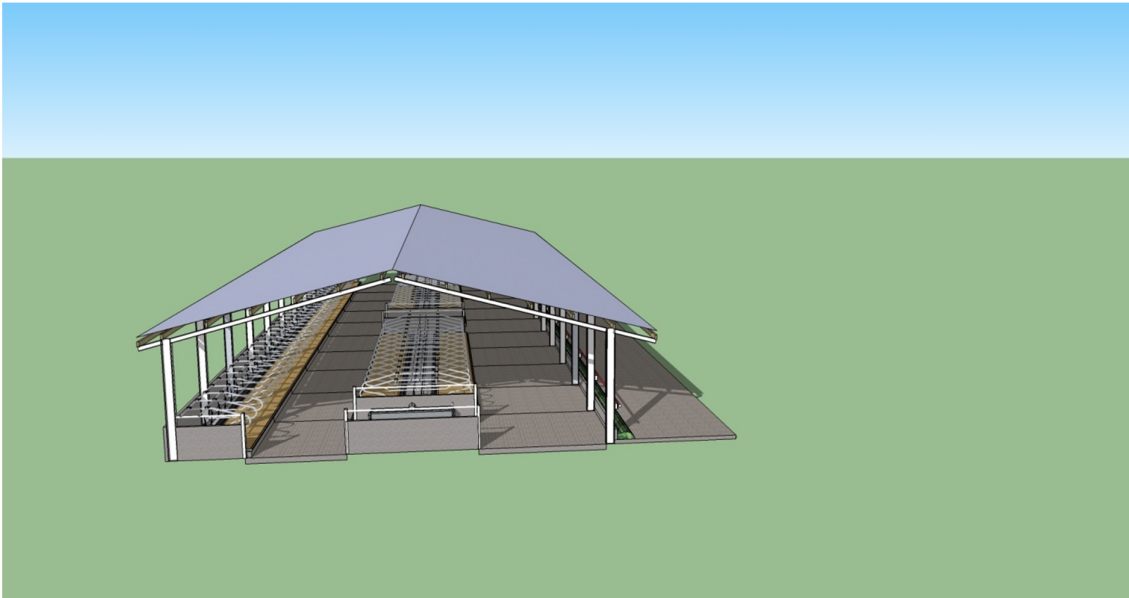
SAMPLE LAYOUTS

When planning a new housing unit you need to consider the long term implications of the current development. Wilson Agriculture like to look to phase 2 and phase 3 which may be 5 or even 15 years in the future.

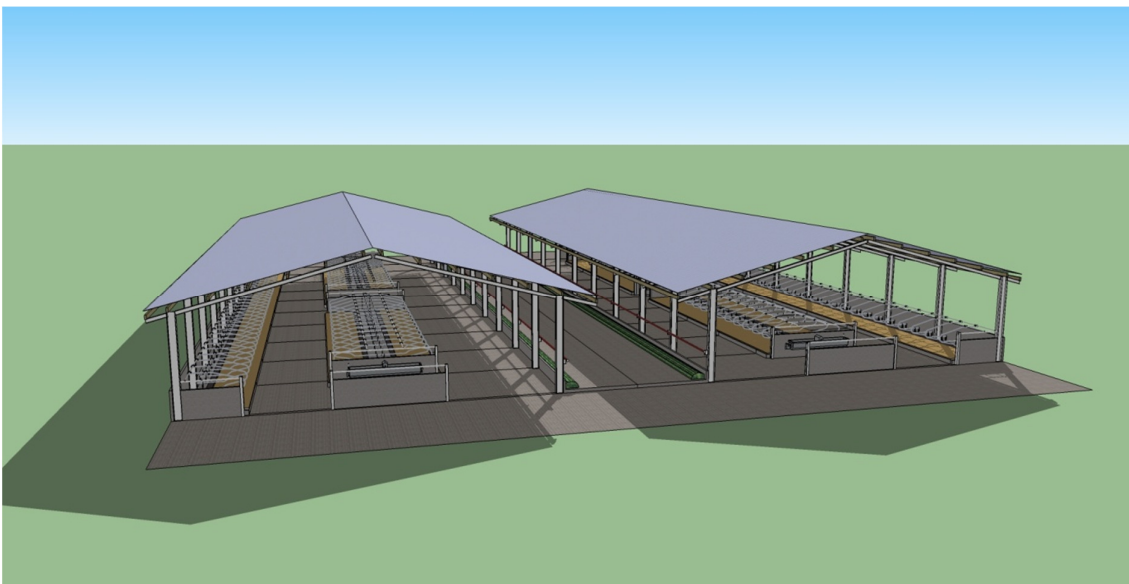


PHASE 1 – single sided

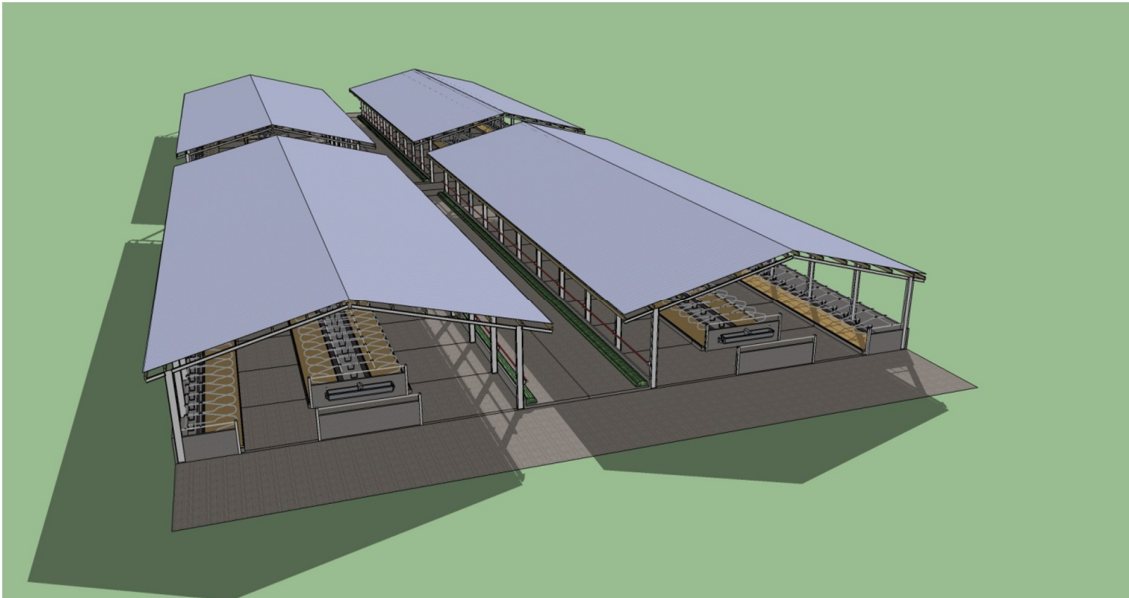
This building will house 102 cows and measure 51ft [15545] wide and 150ft [45720] long. Plans allow for expansion to 204 and then long term phase 3 - 408 cows.



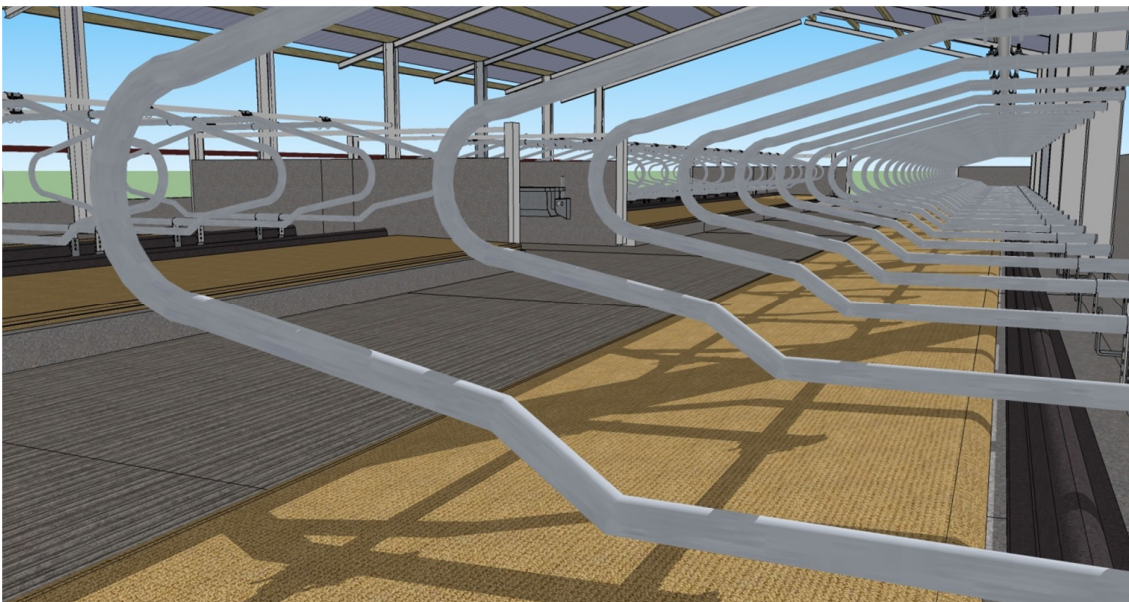
Phase 2 – second building constructed – overall 204 cows



Phase 3 – 408 cows



Internal, 9ft [2743] single rows and 16ft6inch [5092] head to head with 10ft [3048] scrape passage and 15ft6inch [4724] to feed barrier. 22ft [6706] between buildings.



These cubicles are illustrated as our floor mounted cubicles, installed with Pasture Mat mattresses and Poly Pillow brisket barriers. The side of the building is illustrated as open, however in reality we would install ventilation curtains systems.

