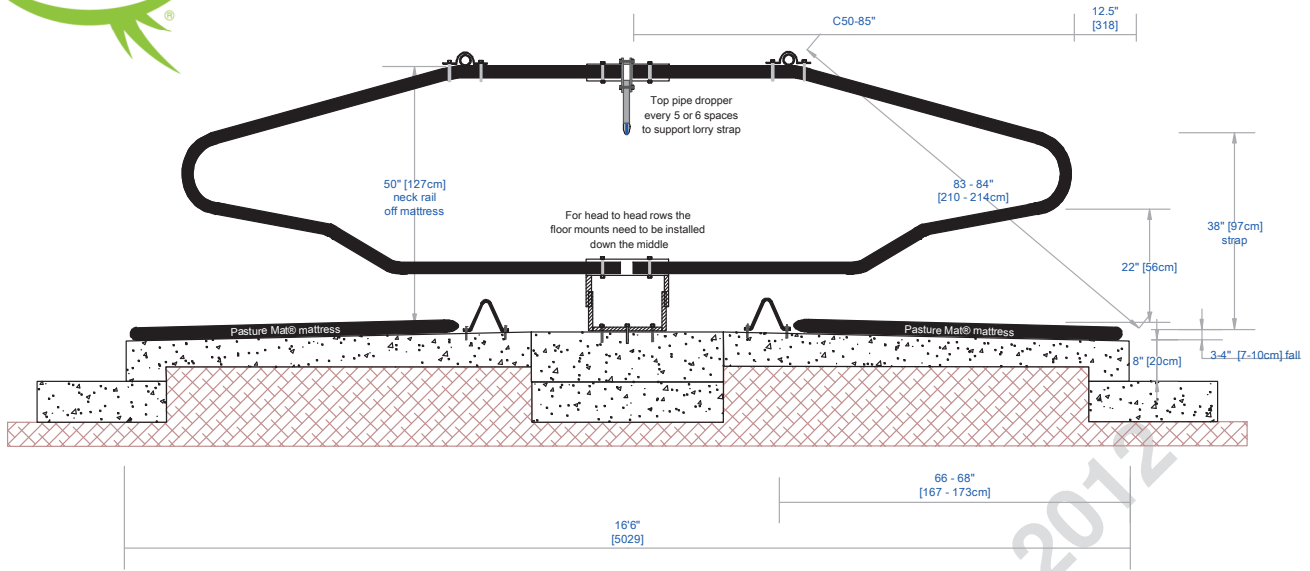
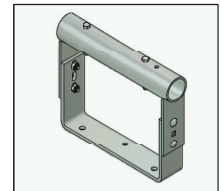
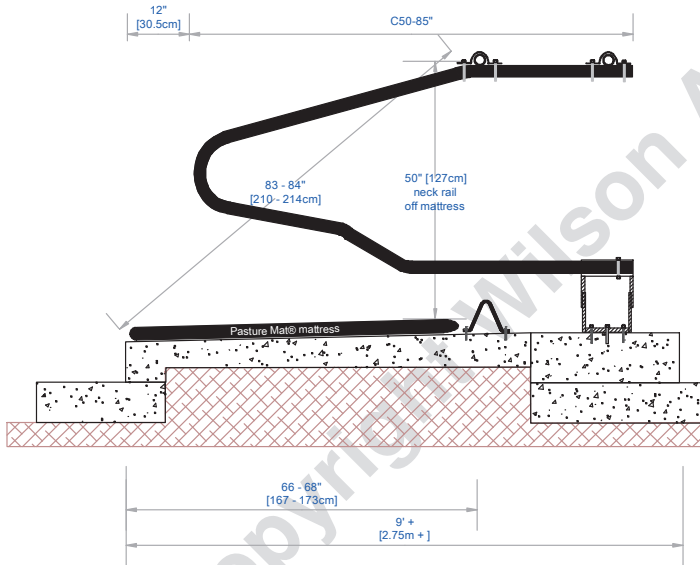



C-50™

The Adjustable Cow Stall



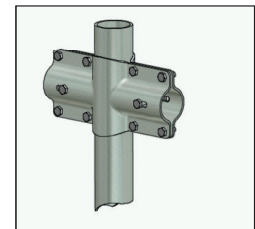
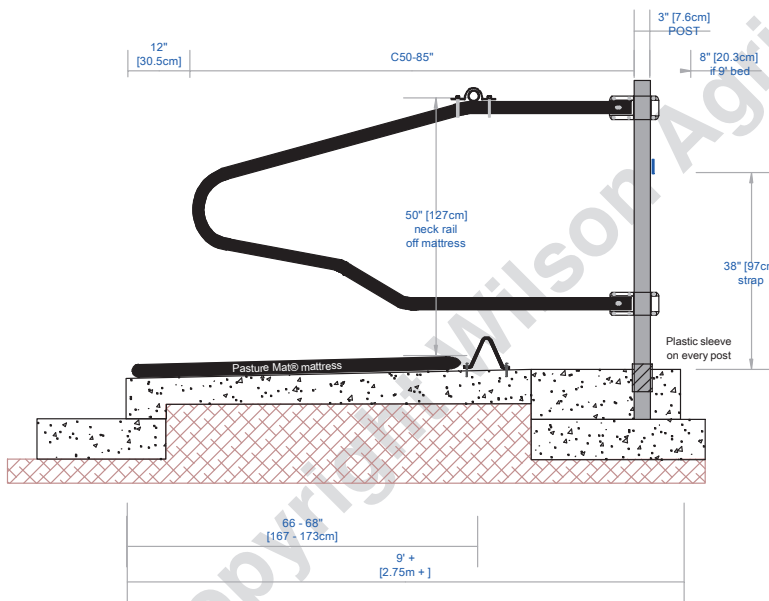
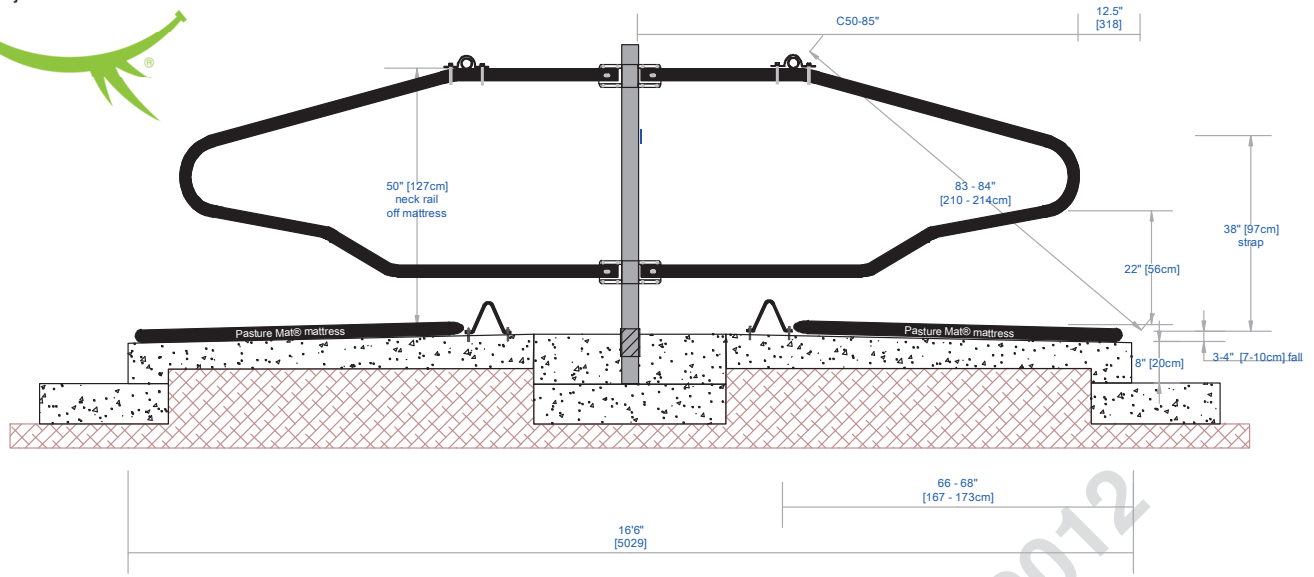
For fixing the floor mount bracket you need a minimum of 6inch [15.25cm] deep concrete pad



TITLE: The Floor Mount Bracket		REVISION:
DETAILS: C50-85" for 9ft+ [2.75m] single row and 16ft6inch [5.03m] head to head		
DATE:	SCALE:	Scale: 1:35
 WILSON AGRICULTURE Dairy Housing Specialists www.wilsonagri.co.uk		DRAWN BY: Ivor Davey ivor@wilsonagri.co.uk

C-50™

The Adjustable Cow Stall



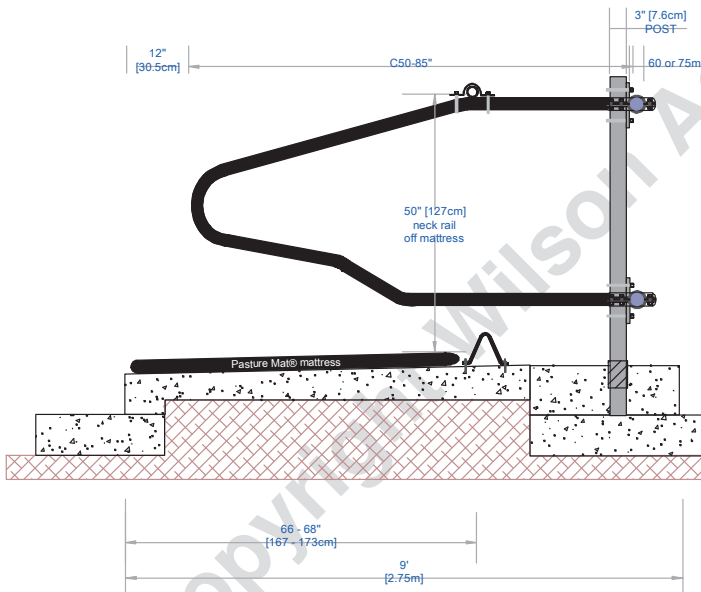
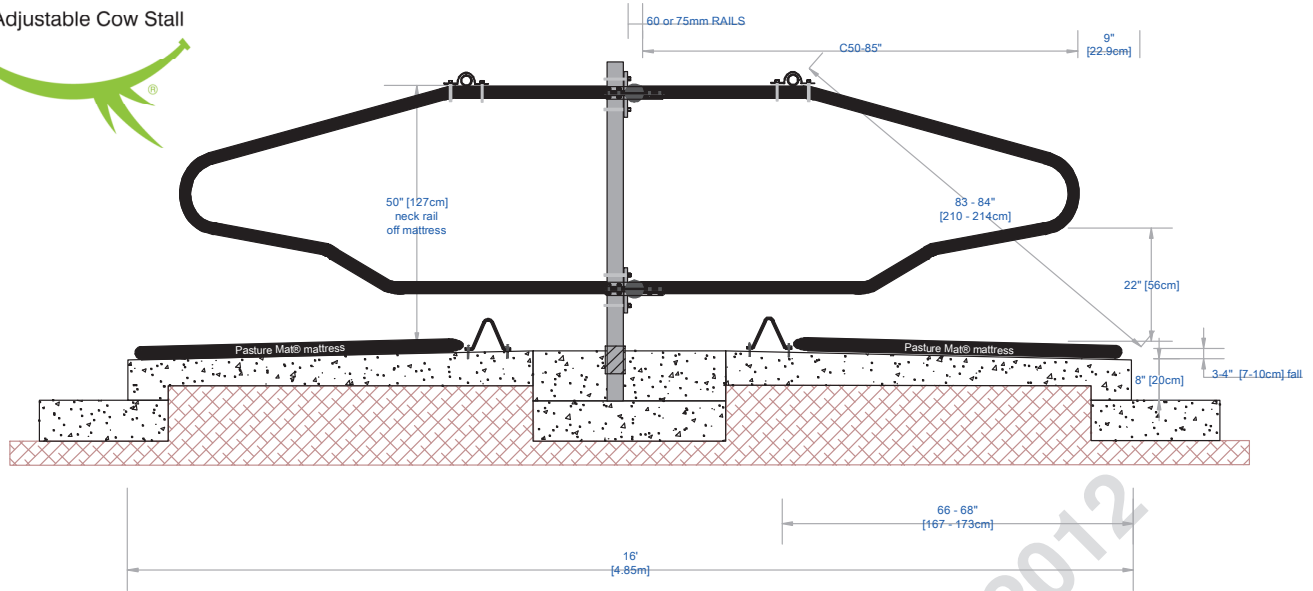
Note: Use the protective post sleeve and dent the post first to prevent it turning in the concrete



TITLE: Post Mounted cubicles	REVISION:
DETAILS: C50-85" for 9ft + [2.75m] single row and 16ft6inch [5.03m] head to head	
DATE:	SCALE: Scale: 1:35
WILSON AGRICULTURE Dairy Housing Specialists www.wilsonagri.co.uk	DRAWN BY: Ivor Davey ivor@wilsonagri.co.uk

C-50™

The Adjustable Cow Stall



NOTES:

- Adjust measurements according to different bed lengths.
- The back of the cubicle needs to be between 6 & 14 inches [15 & 36cm] from the heel curb.
- RAILS CAN BE EITHER 75mm OR 60mm DEPENDING ON SPAN REQUIRED.
- RAILS CAN BE FIXED TO STANCHIONS IF AVAILABLE.
- RAILS ARE NOT PREFERRED IF MAXIMISING COW COMFORT. WE PREFER POST OR FLOOR MOUNTED CUBICLES.

TITLE: Rail Mounted cubicles REVISION:

DETAILS:
C50-85" for 9ft [2.75m] single row and 16ft [4.85m] head to head

DATE: SCALE: Scale: 1:35

Wilson Agri WILSON AGRICULTURE Dairy Housing Specialists
www.wilsonagri.co.uk

DRAWN BY:
 Ivor Davey
 ivor@wilsonagri.co.uk