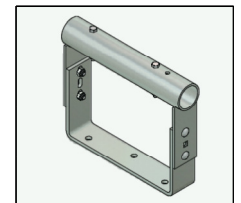
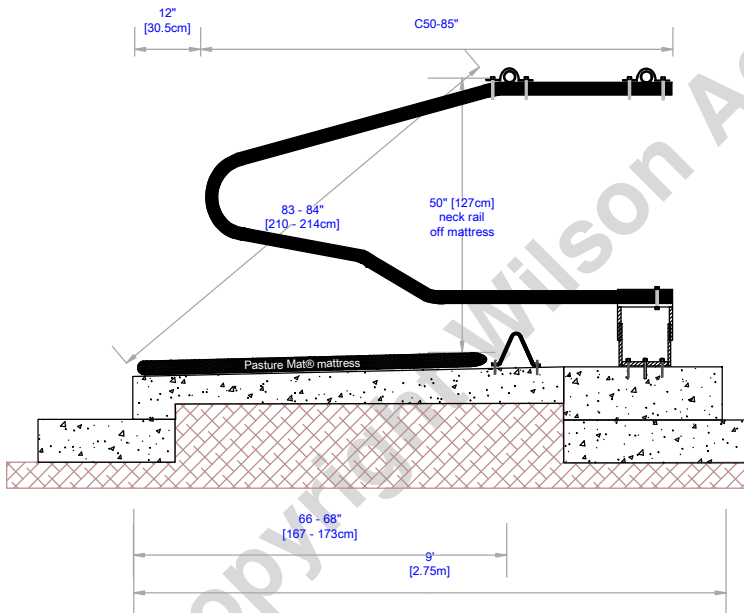



For fixing the floor mount bracket you need a minimum of 6inch [15.25cm] deep concrete pad



TITLE: The Floor Mount Bracket	REVISION:
DETAILS: C50-85" for 9ft [2.75m] single rows and C50-92" for 18ft [5.5m] head to head	
DATE:	SCALE: Scale: 1:35
DRAWN BY:	
 <b>WILSON AGRICULTURE</b> Dairy Housing Specialists <a href="http://www.wilsonagri.co.uk">www.wilsonagri.co.uk</a>	
Ivor Davey ivor@wilsonagri.co.uk	