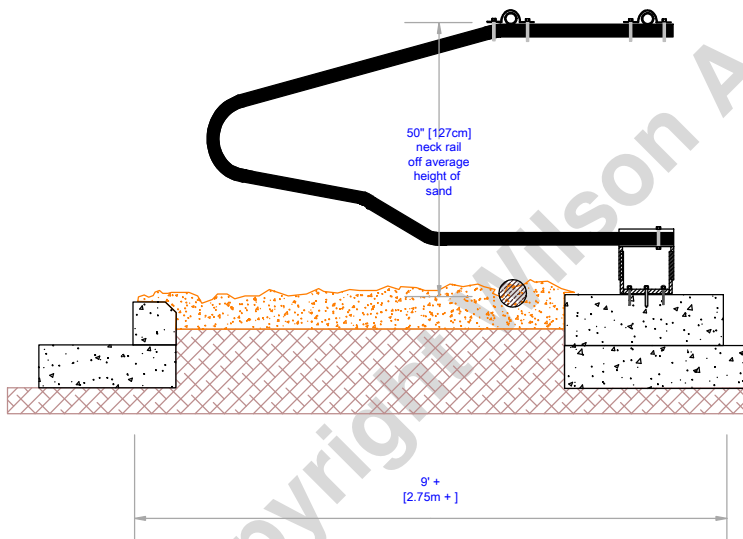
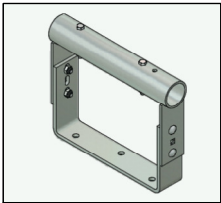



For fixing the floor mount bracket you need a minimum of 7inch [17cm] deep concrete pad



TITLE: The Floor Mount Bracket		REVISION:
DETAILS:		
C50-85" for 9ft + [2.75m+] single rows and C50-92" for 18ft [5.5m] head to head		
DATE:	SCALE:	Scale: 1:35
DRAWN BY:		Ivor Davey ivor@wilsonagri.co.uk
 WILSON AGRICULTURE Dairy Housing Specialists www.wilsonagri.co.uk		