

NEW

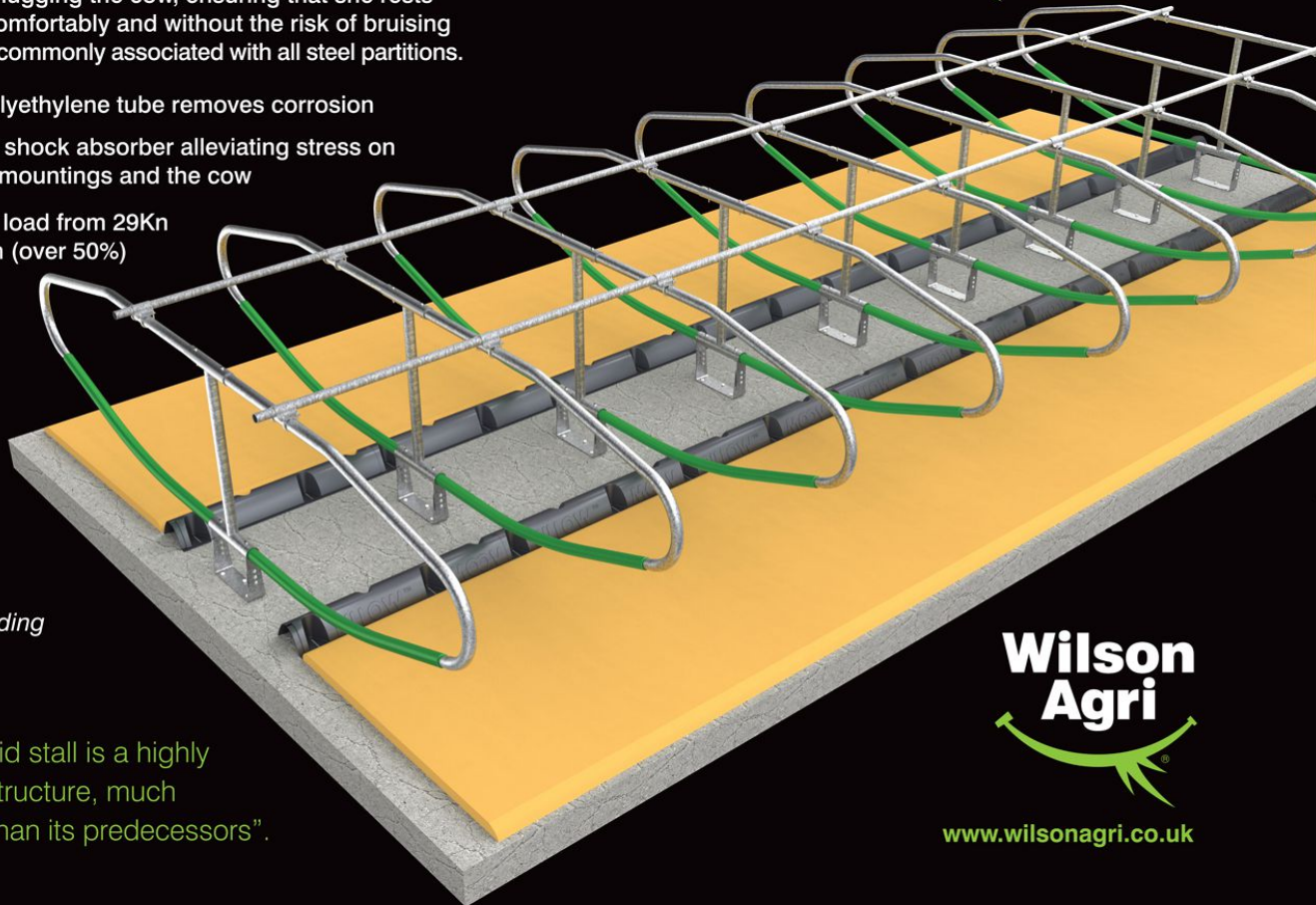
COWCOON[®]

The Hybrid Cow Stall

The Cowcoon hybrid stall offers stability, comfort and control, in the gentlest of manners.

A polyethylene tube on the lower body of the stall partition guides the cow, offering ductile support to her body thus hugging the cow, ensuring that she rests securely, comfortably and without the risk of bruising or swelling commonly associated with all steel partitions.

- Lower polyethylene tube removes corrosion
- Acts as a shock absorber alleviating stress on the front mountings and the cow
- Reduced load from 29Kkn to 12.5Kkn (over 50%)



Patent Pending

"The hybrid stall is a highly efficient structure, much superior than its predecessors".

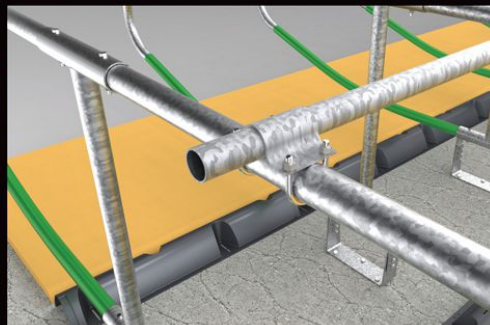
**Wilson
Agri**

www.wilsonagri.co.uk

It's more than a stall... it's a cowcoon.



Flexible barriers reduce stress on parts and increase comfort for cow



Stall available with optional polyethylene or steel neck bar



Complete your Cowcoon[®] with MoovApillow[™] adjustable brisket barrier